

ALL ABOUT CLEEVE

Vol: 30-09 **NOVEMBER 2022** FREE

YOUR VILLAGE MAGAZINE

INDEPENDENT - SELF SUPPORTING - DELIVERED FREE TO EVERY HOME

WHO PUT THIS HOLE HERE???



Photo courtesy: Dave Mortimer

All About Cleeve is also available on line <http://www.cleeveparishcouncil.co.uk/>

Closing COPY DATE: 15th NOVEMBER (for DECEMBER 2022 issue.)

CHAIRMAN'S WELCOME

Welcome back Andrew Grogono from his sabbatical, he has been a stalwart Chairman for many years and everyone on the committee are very pleased for his return in time for the December edition. Our AGM is 2nd November at 7.30 at the Village Hall. Everyone is welcome to attend. Volunteers for the Committee and to assist in the running of this essential village resource will be really appreciated; email me for further details.

Whilst you will have noticed that advertisers have steadily increased during the last few months, more are needed for the magazine to keep going so please encourage businesses to advertise.

Reminder: there is no print run in January so any entries /events for January 2023 will need to be submitted for the December Edition (deadline 15th November).

Finally, please do come and support the Village's activities during the run up to Christmas, including the Christmas Fayre on Saturday 19th November at the Village Hall.

Elizabeth (Acting Chairman)

ALL ABOUT CLEEVE COMMITTEE AND CONTRIBUTORS

Andrew Grogono	Chairman	andrewgrogono@gmail.com	
Hilary Perry	Editor	hilary562000@gmail.com	
Diana Cook	Secretary		834621
Steve Molloy	Distribution		834412
Elizabeth Vaughan	Treasurer	e.m.vaughan@icloud.com	07787 781716
Pauline Leverett	Graphics		833648
Sarah Cush	Member		832059
Ross Floyd	Photo competition / the paranormal	ross@mvbalmoral.com	
Nick Green	Farming news	nickgreen@lyecrossfarm.co.uk / lyeholeestates@gmail.com	
Darren Hall	Community matters	darrenehall69@gmail.com	
Debi Holland	Gardening / plant of the month	dh@debihollandgardening.com	
Alice Jones	King George V playing fields	a.jones34@hotmail.com	
Michael Loader	Story telling	foolworks@yahoo.co.uk	
Steve Molloy	Community resilience	steviemolloy@aol.com	
Dave Mortimer	FOCOS	cleve.mortimers@gmail.com	
Marianne Pitman	Local History Society	marianne.pitmanpc@hotmail.com	
David Ridley	Local history	daveandanneridley@outlook.com	
George Stringer	Local events news	jostringer058@btinternet.com	
Nigel Thomas	Church news	nigelbthomas1@gmail.com	
Andy Warren	Cleeve Parish Council news	cleveparishcouncil@hotmail.com	
Jayne Weare	Cleeve Tennis Club	clevetennisclub@gmail.com	
Steph Wooster	Bee Keeping	stephanie.wooster@uwe.ac.uk	

We are grateful to the volunteers who walk the village monthly to deliver your free copy

Full copy of our editorial DISCLAIMER / Committee minutes are available from the Secretary

"The service provided by Parker's was exceptional. The team were transparent and maintained regular contact with me throughout the process. From viewings to completion, Parker's worked hard to establish a sale."



01275 463096



www.parkers-ea.co.uk

info@parkers-ea.co.uk
1/3 Station Road, Backwell,
North Somerset, BS48 3NW



Parker's
Estate Agents & Property Lettings

Successfully selling and letting homes since 1989

**Your local shop for newspapers, off licence, groceries,
lottery, PayPoint, cashback and Post Office**



**Opening hours Mon-Fri 6.00am-10.00pm, Sat-Sun 7.00am-10.00pm
Post Office Tuesday and Friday 9.00am-12.00pm
Tel 01934 834893**

HOLY TRINITY SCARECROW TRAIL

June and Lin would like to thank everyone who took the time and trouble to make a Scarecrow for the Trail on 17th/18th September.

When we decided to go forward with plans for a Scarecrow Trail weekend, we did so with a lot of hope and prayer, but also with a little bit of trepidation, as we had no idea how many people would be prepared to make a Scarecrow.

In the end, we were so pleased that there were nearly 40 Scarecrow figures, made by over 30 households in Cleeve – they were all brilliant!!

Over the weekend, there were numerous groups of people going round to admire the ingenuity, resourcefulness and pure comedy of the Scarecrows. Feedback was aplenty – fun, funky and feisty – every one was a winner!

We also hoped to raise a small amount to support two good causes – The Clevedon Foodbank and the DEC Ukraine Appeal – from donations and the goodies on offer at the Scarecrow Tea Room. With the Tea Room raising £440 and so many generous donations totalling £430, we have been able to send £435 to each of the good causes – which is wonderful.

Thanks again

June and Lin

YATTON LOCAL HISTORY SOCIETY

Tuesday November 1st 7:30pm Yatton Methodist Church

There will be a talk on Backwell and the Brickworks by Roy Ackrill.

If you are not a member and want to join or want to register an email address please contact YLHS at yattonlocalhistorysoc@gmail.com

Marianne Pitman

ST BRIDGET'S, CHELVEY, CHRISTMAS FAIR

Saturday and Sunday, 12th and 13th November, 10.30 am - 4.00 pm .

Range of local artists and craft people displaying original ideas for Christmas

Enjoy tea and coffee and home-made cakes

Donations in favour of three charities

Plenty of parking alongside church

Tony Stirratt

TIP FROM CLEEVE NURSERY

Protect tender alpine plants from the cold and wet. Many are protected by several feet of snow where they grow in the wild. This not only protects them from severe cold but also keeps them drier. Use a sheet of glass or a garden cloche.

**NORTH SOMERSET
WEDDING & EVENT CARS
07599 564794**

Professional, Reliable, Affordable



***WELCOME TO OUR NEW LOCAL
COMPANY IN CLEEVE***

When you book with us, you know you are in the hands of a quality brand that is the first choice for any couple thinking of getting married or for any celebratory event such as Proms, Funerals and Birthdays.

We happily embrace the LGBTQ+ community.

We can even offer bespoke chauffeured transportation for any destination, including London Airports.

We offer you a beautiful contemporary Jaguar XF or a classic Rolls Royce Silver Spirit.

We look forward to taking care of you.

northsomersetweddingandeventcars.co.uk



YATTON MUSIC SOCIETY

The Note Warehouse Concert at St Mary's, Yatton, November 26, 2022.

Hollie-anne will present a popular operatic themed concert for the Yatton Music Society at St Mary's Church with students and tutors from the Note Warehouse. The concert will cover a variety of genres from many composers including Handel, Britten, Strauss, Kurt Weill, Billy Joel. The concert starts 7.30 and details can be found www.yms.org.uk

HOLLIE-ANNE BANGHAM



SCAM ALERT!

The consumer magazine WHICH is offering a free scam alerts service. Please go to <https://act.which.co.uk/page/103781/data/1> for more details
Stay Safe

*Steve Molloy
Community Resilience co-ordinator*

PS This isn't a scam!

TIP FROM CLEEVE NURSERY

Deciduous trees that have lost their leaves can be pruned now



TOUT'S
PASSIONATE ABOUT FOOD

10% OFF
all fruit & veg!
THROUGHOUT NOVEMBER

*with your
TOUT'S Card*



T&Cs apply. TOUT'S Cardholders with a fully registered TOUT'S Card receive 10% off fresh fruit and vegetable purchases by scanning their TOUT'S Card between 1st-30th November 2022. Subject to availability. Tout Ltd reserve the right to withdraw offer at anytime without notice. E&OE.

ToutsFood  | **TOUT'S**
touts_food  | PASSIONATE ABOUT FOOD
touts.co.uk

HELP AVAILABLE

Holy Trinity, with PCC approval, is attempting, in a small way, to help those who live in Cleeve with their heating costs. Via various methods of communication, we are hoping to get the following message to every Cleeve resident.

HEATING COSTS: We all know that heating costs are becoming a burden on everyone's budgets. We could all do with some help with these costs, however small.

SOUPA THURSDAY: With this in mind, Holy Trinity Church would like to invite anyone, of any age, who lives in Cleeve to join us in the Church Room every Thursday throughout the winter, from noon until 4pm.

So turn down your own heating on Thursday afternoons and drop in at the Church Room - to have a chat with friends, old and new. Feel free to bring your own activity - a book to read, some knitting, do a crossword or jigsaw puzzle, or something else of your choice.

To warm everyone up, there will be soup served every week from noon, and continuous cups of tea and coffee will be available throughout.

We would love you to join us every Soupa Thursday throughout the winter, **starting on Thursday 3rd November**. There is parking in Holy Trinity's car park, but if you need transport lifts are available – just ring 838515.”

FOCOS CHRISTMAS PARTY 2022

After a 3 years wait - it's back!!

The food has been ordered; the pantomime continues to be rehearsed; the wine is being chilled; the tickets have been printed; the transport is being arranged; the menu has been agreed – and the only thing left is to notify our clientele that the FOCOS [Friends Of Cleeves Over Sixties] Christmas Party has been booked for

Saturday 3rd December
5.45pm for 6pm start

Invitations for Cleeve's social event of the year will be distributed over the weekend of 19th /20th November. Any problems regarding tickets delivery, please ring the FOCOS Christmas Party hot-line on either 838515 or 832917.

TIP FROM CLEEVE NURSERY

Sweep up leaves and compost them add a compost accelerator to speed up the process.

Disconnect your hosepipe from the outside tap, store it and lag the tap to protect it from frost.

SUN HALL 新好
CHINESE FOOD TO TAKEAWAY



7 BISHOP ROAD, CLEEVE, BRISTOL BS49 4NQ
01934 876888

justU
counselling

07519 554016
Reasonable Rates
First session free!

Amanda Bangham FdSc, Dip Couns, Mbacp

 justucounselling@gmail.com  
www.justucounselling.co.uk

 **LOCAL PLUMBER**
207533

FOR ALL YOUR PLUMBING & HEATING REQUIREMENTS FROM TAP WASHERS TO CENTRAL HEATING



L.D. HULLAH 01934 833357
MOBILE: 07976 833974

Kodurand Violin School

- Award-winning professional violinists
- All ages and levels, from age 4+
- Free no-obligation trial
- Wide range of repertoire and styles taught
- Free summer and winter student concerts

Tel 07751 036427 or 07813 043809
www.kodurandviolinschool.com

COMMUNITY RESILIENCE

The Village Hall is the assembly point and operating base for the community resilience team (when mobilised) providing help and assistance in an emergency.

So if you need (or are willing to offer) help in an emergency and can not contact Community Resilience by phone please go along to the village hall.

Contact details for Community Resilience can be found in the directory on page 22.


Solarsense
Renewable Energy Installers

Arrange your free, no obligation quote today
Find out how much you could save!



01275 461 800
info@solarsense-uk.com
www.solarsense-uk.com
Helios House, Brockley Lane,
Backwell, Bristol, BS48 4AH

CHRISTINGLE SERVICE

**HOSTED BY CLEEVE & CLAVERHAM
MOTHERS' UNION**

**HOLY TRINITY CHURCH, MAIN ROAD, CLEEVE
SUNDAY 4TH DECEMBER AT 4PM**

**EVERYONE IS WELCOME - CHILD-FRIENDLY
SERVICE, AND A LOVELY TIME FOR ADULTS TOO!
- A CHRISTINGLE TO TAKE HOME FOR
EVERYONE
- HOT DRINK AND MINCE PIES/CAKE
AFTERWARDS FOR ALL**

**THE IDEAL WAY TO START PREPARING FOR
CHRISTMAS - COME AND JOIN IN THE
CELEBRATION.**

The service is in aid of the Children's Society.



CLEEVE & CLAVERHAM MOTHERS' UNION warmly invite you to the above Christingle Service at Holy Trinity Church, on Sunday 4th December at 4pm.

The Christingle adopted by the Children's Society is a special service that brings together children and families to celebrate the Christmas message. The symbols of an orange and Candle represent the World, and Christ as the Light of the World

HOLY TRINITY CHRISTMAS FAYRE

SATURDAY 19TH NOVEMBER at Cleeve Village Hall from 11am to 3pm

There will be all the usual fun-of-the-Fayre events, with numerous stalls providing Super Hand-Made Gift Ideas for Christmas, together with lots of other stalls including preserves, jams, scrummy cakes, tombola, pick a basket, bric-a-brac, books,

In addition, there will be delicious piping hot lunches, with tea and coffee served throughout the day.

Come along and enjoy a really friendly and fun event, with super bargains and chances to win some wonderful prizes, especially in the BIG raffle, to be drawn at 2.30pm.

If you would like more details about the day, are willing to help in any way – eg bake a cake, bring bric-a-brac, donate prizes, run a stall, etc. please ring Lin [838515] or Gill [832917]



**HEALTHY FIT LIFESTYLE
PERSONAL TRAINING**
1-2-1 Training, Semi-Private
Training & Group Classes

GROUP CLASSES at Claverham Village Hall
Mondays @ 6.45pm - Full Body Circuit Training
Wednesdays @ 6.15pm - Legs, Bums & Tums

Small daytime group classes available at Cleeve
Cricket Club, different days & times available

Please get in touch to book your place
chelseahealthFL@gmail.com 07944 408481

Keith C. Britton & Son 
Funeral Directors

Independent Family Funeral Directors.
Established over 55 years

10 High Street, Yatton, North Somerset BS49 4JA
Tel: 01934 832115

Private Chapel of Rest
24-hour emergency service 365 days a year.
Home visits available for funeral arrangements and
no obligation pre-paid plans.

STAR 65 BEREAVEMENT GROUP

Free and open drop in sessions to our peer supported Bereavement and Loss group every 2nd and 4th Wednesday 4-6pm and Saturday 12-noon at 65 High Street, Nailsea. Come and chat or just listen. For information contact:
Pam Lambert 01275 462820 / 07977 9564
Gill Atkinson 07722 298550

Arthur E. Davey & Sons Ltd

Independent Family Funeral Directors
01275 852307 

Serving the community for more than three generations

Pre-payment Plans
Private Chapels of Rest
Home visits

 Tony Davey Dip F.D. M.B.I.F.D.
Nicola Davey Dip F.A.A.
David Johnston
Yvonne Wadsworth

**82 Silver Street
Nailsea
BS48 2DS**
www.aedavey.co.uk



✠ CHURCH NOTICE BOARD - NOVEMBER ✠

SUNDAYS

6th - 10am - **Holy Trinity:**
IN GOD'S HANDS - remembering those loved but no longer seen + Shared Parish Communion

13th - 10.45am - **Holy Trinity:**
Act of Remembrance + Service

13th - 10.45am - **St Barnabas:**
Act of Remembrance + Parish Communion

20th - 10am - **Holy Trinity:**
Shared Parish Communion

27th - 10am - **St Barnabas:**
Advent Eucharist


27th - 4pm - **Holy Trinity:**
Advent Taizé

THURSDAYS


9.30am - **Holy Trinity:**
Healing Prayer
[+ Communion on 3rd and 17th]

DECEMBER

4th - 10am - **Holy Trinity:**
Shared Parish Communion

4th - 4pm - **Holy Trinity:**
ALL AGE CHRISTINGLE SERVICE!
- in aid of the Children's Society 

FAITH HOPE LOVE - Team Vicar:
Rev. Nigel B Thomas - 01934 283340



YATTON LOCAL HISTORY SOCIETY

Programme of talks 2022 - 2023

ALL MEETINGS in Yatton Methodist Church, High Street, BS49 4DW at 7 30pm, except 3/1/23 which will be by Zoom. Doors open 7.15 pm

Tuesday November 1st

Backwell and the brickworks: An interesting look back at Backwell's once thriving industrial and commercial past

Roy Ackrill

Tuesday December 6th

Port of Bristol: The Gateway to the World

Clive Burlton

January 3rd (Zoom)

Here we are again: A very brief history of pantomime

Dr Ann Featherstone

Tuesday February 7th

Local Voluntary Archaeology Team: An update on the work of YCCCART in the locality

Arthur Langley

Tuesday March 7th

AGM with light refreshments

Cleeve: What might you learn of the history of Cleeve by walking through it?

Marianne Pitman

Tuesday April 4th

The Matthew of Bristol: The story of the modern "Matthew" and how the modern replica came to be built

Clive Burlton

Tuesday May 2nd

Architectural Follies of Bristol and Somerset: Who on earth built that and for what - passion, megalomania, artistry, wealth and conflict with neighbours?

Jonathon Holt

FOCOS (Friends Of Cleeve Over Sixties)

Winning numbers for the FOCOS lottery

3rd September	6	Jean Ashman
24th September	51	Marion Atwell
1st October	21	Chris Waite

We continue to say 'thank you' to everyone who has a ticket in the FOCOS lottery, as we continue to get underway again with our events.

TIP FROM CLEEVE NURSERY

Reduce water given to cacti and succulents in winter, they still need some and will also benefit from a weak feed every month or so. Christmas cacti [Zygocactus or Schlumbergia] need more regular watering otherwise they will drop their flower buds.

North Somerset Agricultural Contractor

07747 603368



Services include:

- Conventional Baling
- Round Baling, Wrapping & Hauling
- Mowing, Tedding & Raking
- Hedge Cutting
- Flail Topping
- Operated Digger Hire with various attachments
- CPCS Operator
- Cultivation
- Harrowing, Rolling & Aeration
- Fencing - Ditching
- General Groundworks

WWW.JONRICHARDSCONTRACTING.CO.UK
FACEBOOK @ JONRICHARDSCONTRACTING



COUNTRY COLLECTION

Contact us at:
Tel: 01934 832269
simon@countrycollection.co
www.countrycollection.co

Visit us at:
Country Collection,
Rhodyate Hill,
Congresbury, North
Somerset
BS49 5AJ

A family run business with over 20 years experience. Based in Congresbury, North Somerset. We offer a wide range of wood, multi fuel, gas and electric stoves and fireplaces as well as new outdoor fires. Our installers are HETAS & Gas Safe registered for full peace of mind.



POST OFFICE
 Opening times
 Cleeve (Good News)
 Tuesday & Friday 09.00 – 12.00
 Claverham (Village Hall)
 Monday & Wednesday 09.00 -12.00

**LOCAL POST-BOX
 COLLECTION TIMES**

	Mon-Fri	Sat.
Woodview Drive	9.00am	07.00am
Bishops Road	4.00pm	10.30am
Main Road (Old PO)	9.00pm	7.00am
Claverham Park	9.00am	11.00am
Yatton PO	5.45pm	11.15am
Congresbury PO	5.15pm	11.15am
Congresbury Broad St.	5.30pm	9.00am
Backwell PO	5.30pm	12.15pm
Clevedon Delivery Office	6.00pm	

Paul and Renate invite you to a

Christmas Extravaganza

1st - 14th November 2022

11am–6pm every day
 (evenings and other times by arrangement)

We are selling beautiful Christmas gifts made by us and other local crafts people, and you can also enjoy fresh, homemade cakes and refreshments.

3 Bishop's Mead, Cleeve BS49 4NH
 Tel - 01934 835141
www.woodnthings-uk.com

All proceeds from refreshments and a percentage from all sales will go to Children's Hospice South West.

There is also a raffle for Cancer Research UK

Supporting children's hospice SOUTH WEST
 Registered Charity No. 1003214



CLEEVE PARISH COUNCIL UPDATE

Council Meetings: Meetings are held in Cleeve Village Hall on the 2nd Tuesday of each month (except August and December when no meetings are held).

Details of meetings, agendas and minutes continue to be published on our website.

You can access our website at www.cleeveparishcouncil.co.uk

Our Chair of the Parish Council is Ronnie Morley with Ben Whistance being our Vice Chair.

Your other Councillors are Hilary Burn, Marianne Pitman, George Stringer and Geoff Pritchard.

Traffic Strategy for Cleeve: Our Traffic Survey closed on 31 October and we are currently assessing the responses.

Parking: Inconsiderate parking is becoming a very frustrating issue around the village in particular:-

PLEASE DO NOT PARK ON PAVEMENTS: It is not necessary and encourages others to do so. It also causes an obstruction to pedestrians, those with prams/pushchairs and those with mobility aids.

PLEASE DO NOT PARK ON POUND GREEN: Pound Green is a public green space and vehicles must NOT be parked on it.

Notice Board at the Goblin Combe Quarry Car Park: We are pleased to announce that a new information and notice board has been installed at the Goblin Combe Quarry Car Park.

Air Quality Monitoring: In liaison with North Somerset Council we are continuing Air Quality Monitoring particularly on the A370 in the area around the Tout's development. We therefore have a reference point ahead of the site being opening and this is continuing now that the site is operational.

Can't afford to buy a sim card or mobile data? You can now access them for free thanks to a new scheme available through North Somerset Libraries.

The UK National Databank provides free sims and mobile data (as well as talk minutes and texts) to people in need through the Good Things Foundation's network of local community partners, including North Somerset libraries. It's like a food bank but for internet connectivity data.

The scheme offers a vital connection for anyone cut off from the basic daily activities most people take for granted such as contacting loved ones, accessing job interviews, finding essential health or other information online, and digitised public services.

Anyone over 18 from a low-income household who qualifies in at least one of the following ways can obtain data vouchers from their local library:

- 1 Has no access or insufficient access to the internet at home, and/or
- 2 Has no or insufficient access to the internet when away from home, and/or
- 3 Can't afford their existing monthly contract or top-up.

If you need a SIM card or mobile data voucher, contact your local library to make an appointment to collect it.

www.n-somerset.gov.uk/libraries e-mail libraries@n-somerset.gov.uk
01934 426 834.

Read the story in full <https://www.n-somerset.gov.uk/news/free-sim-cards-mobile-data-north-somerset-libraries> #DigitalInclusion #NationalDataban

Millennium Gardens: Millennium Gardens is a green space for the enjoyment of residents. But please note that dogs are not permitted in the Gardens.

In particular it is NOT a dog toilet.

Dog Poo!! On that subject - although most dog owners act responsibly there are still examples of instances of dog poo not always being picked up. Whilst this is, of course, anti-social it also is worth reminding dog owners that North Somerset Council have published local Public Space Protection Orders (PSPOs).

The orders state that if you are in charge of a dog you must as a minimum:

keep your dog(s) under close control at all times

carry a poo bag

bag it and bin it – please don't leave bags hanging in trees or bushes

keep your dog(s) out of children's play areas.

So how can we all do our bit to help turn things around?

Help is at hand – in the form of a new free app at <https://poopersnooper.app/get-started>

Pooper Snooper lets you highlight the problem of dog fouling wherever you are and puts dog fouling on the map! The app also allows you to record and find the location of bins so that it's easier than ever to find where to dispose of your doggy deposits.

Communities can use this to highlight and monitor problematic areas and it is hoped that the data will better enable authorities to act, for example, by providing extra and/or better placed bins or by enabling the efforts of over-stretched dog wardens to be better targeted.

Keep Cleeve Tidy: Our Village Orderly, Caroline, does a great job in keeping the village litter free (although this is often an uphill task!). We would be interested to hear if there are any areas of the village which you feel need any special attention at any time. Also if you have any ideas to brighten up the village then please let us know by emailing me on cleeveparishcouncil@hotmail.co.uk or on 07932 191964.

Facebook and Website: You will find us on Facebook if you search **Cleeve Parish Council** and like our page. We update various issues of local interest, and activities of the Parish Council.

We are also pleased to post a link on our website to view the current "All About Cleeve" each month.

I can be contacted on 07932 191964 and by email on:

cleeveparishcouncil@hotmail.co.uk www.cleeveparishcouncil.co.uk

Andy Warren

Clerk to Cleeve Parish Council

TIP FROM CLEEVE NURSERY

Pinch immature figs off outdoor plants. These will not grow on if left but will rot on the tree so are best taken off now. Anything smaller than the size of a pea can be left to grow on and should survive the winter to ripen next summer. Where the fig is growing in a pot protect the tender roots from frost by wrapping the pot.

FRIENDS OF BROCKLEY CHURCH NEWSLETTER

As you may have noticed, the clock appears to be working . A lot went on in the background to reach this point although I am some people thought we were just ignoring it. Hopefully the clock will now keep ticking for a number of years without further problems and Nick our Clock Master is organising the winding rota again.

We urgently need a treasurer. Jane has done the job for a long time but is now living away from our area and can't continue. It is not onerous but we do need someone to keep an eye on the accounts. You won't have to handle cash as that is paid in directly, but we need a volunteer to take over. Please contact me via email – ross@mvbalmoral.com . Thanks. This is quite urgent.

Brockley Brainstorming sessions are back and we need YOU to come and give us your ideas. The events are great fun, we have tea and usually some rather nice nibbles, light hearted banter and some really productive suggestions. These meetings form the heart of what we are trying to do for the Church, so if you possibly can, please come along.

We have a 'Maintenance Day' on 26th November where anyone with gardening or DIY skills is welcome to come along and help tidy the Church, do some cleaning, put up some pictures and fix some of the broken furniture. It is all basic and not very involved but many hands make light work and this will have the place looking nice for the Patronal Service. We will have the kettle on so it won't be all work !

Our main event this Autumn is a lecture on the Gunpowder Plot by Baz Hamblin. Baz is a wonderful speaker, ex RAF navigator, Councillor, Town Mayor and Lavender grower – and those are just some of his activities. He is spellbinding and offers a number of amusing and well researched lectures that go behind the commonly known facts to get to the real heart of the matter. As a starter we chose the Gunpowder Plot as the talk is scheduled for the day after Guy Fawkes night. We hope you will join us. Obviously it is a good fund raiser for the Church but it will also be a fascinating evening with refreshments as usual and a good 'vibe'. Book the date – 6th November.

CHRISTMAS WREATH WORKSHOP

Saturday 3rd December at 2pm

The Friends of Brockley Church and The Blossom Parlour look forward to welcoming you this very special one off Christmas wreath making workshop. Join us on Saturday 3rd December at 2pm for festive floral fabulousness!

Using the highest florist standard and eco friendly techniques, Amy will guide you through creating a Christmas wreath that you'll never want to take down. The Blossom Parlour is proudly floral foam and plastic free as well as having a strong focus on seasonal British grown flowers and foliage. This means you can enjoy your wreath knowing that the impact it has made on the planet has been minimal.

Book online at <https://www.blossomparlour.co.uk/product-page/chrsitmas-wreath-workshop-9th-dec>

Ross & the Committee.



THE
BLOSSOM
PARLOUR

*Christmas
Wreath Workshop*

*Join us at St Nicholas, Brockley at
2:00 PM to
on Saturday 3rd December, 2022!*

—>>>—

TO BOOK, VISIT
WWW.BLOSSOMPARLOUR.CO.UK



CLEEVE COMMUNITY 2050

*What might Cleeve look like by 2050? Can we do anything about it?
Are you bothered?!*

Cleeve Community 2050 has been formed by a small group of Cleeve residents, who are keen to try and find ways to improve the quality of life for residents, taking into account the long-term needs for future well-being such as energy security, climate change, public transport, biodiversity, village amenities and much more.

The first step is to find out what the people who live and work in the village think about Cleeve; what is good about it, and what they think could be improved. It is crucial that as many people as possible have opportunities to help shape the plan and we hope that many of you will then become involved in developing the plan and then making it happen. We will also be sharing the results with the Parish Council to make sure that any plans can be made jointly.

You can either use the QR code on your phone, or go to www.smartliving.org.uk/cleeve-community-2050. Members of the steering group will also walk around the village to drop off paper copies and answer any questions you may have or you can email cleevecommunity2050@gmail.com to find out more.

The survey will close on Friday 2 Dec, after which the results will be published. We then hope to organise a public meeting early in the New Year.

Darren, Colin, Christine & Nigel.



TIP FROM CLEEVE NURSERY

Check fruit trees for signs of canker. Cut off infected shoots if small but for larger important branches it will be necessary to brush away the dead loose cankered tissue, tidy it up with a sharp knife and then paint the wound with Arbrex Seal and Heal. Unfortunately canker is more common in the West Country. Now is a good time to plant varieties that have canker resistance like 'Sunset', 'Fiesta' and 'Bramley'.

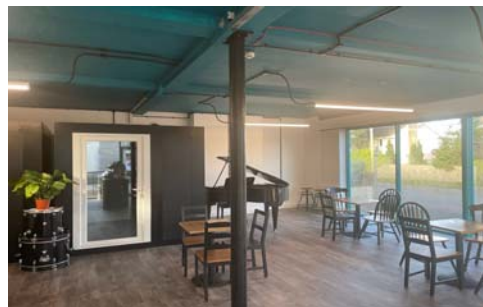
'THE NOTE WAREHOUSE' MUSIC SCHOOL

The Note Warehouse in Yatton opened in January 2022 and was the inspiration of Hollie-anne Bangham, a mezzo-soprano originally from Cleeve in North Somerset. Hollie-anne sings with the English Touring Opera and wished to open a music school with facilities for students to sing or learn musical instruments, and study music theory in a conducive environment. The school was converted from the old 'Bet Fred' premises on Yatton High Street and has two soundproof acoustic pods and one teaching room. In the entrance area there is a coffee shop for waiting parents or local folk to enjoy a cosy cup and locally sourced refreshments.

Since opening, the Note Warehouse has gone from strength to strength and currently has over 160 students of all ages with eleven tutors teaching singing and a range of instruments including, piano, flute, violin, drums, guitar, clarinet, trumpet. Tuition for music theory and performance examinations are available and distant learning can be provided if preferred.

The Warehouse has a piano in the coffee shop which pianists can use to practice and entertain customers enjoying their refreshments. 'Open Mic' or 'jam sessions' are also regularly held for aspiring musicians to entertain each other and customers.

Details of 'The Note Warehouse' facilities and tuition available can be found on www.thenotewarehouse.co.uk.



TIPS FROM CLEEVE NURSERY

Wash bird feeders and tables with Jeyes Disinfectant to minimise spread of bird diseases.

Erect a net over your pond to prevent falling leaves from trees and shrubs getting into the water and increasing the nutrient levels when they breakdown. They may also deprive the fish of oxygen as they decompose.

PLANT OF THE MONTH - HOUSEPLANTS

As the evenings draw in and our gardens begin to gently fade into a graceful slumber it is time to turn our attention to our indoor spaces. Over winter we are likely to be spending more time indoors so fill your home with plants and bring the garden inside.

Plants are great for wellbeing. As light levels and temperatures drop having plants around us can lift spirits. Add houseplants to your life and green up your home. Here are a few ideas.

Dracena trifasciata (formerly *Sansevieria trifasciata*), snake plant is a stunning architectural plant which will reach for the skies. It has stripy long green leaves, often edged with a gold margin, and can survive with sparse watering so perfect for busy people who may forget to water houseplants!

Pilea peperomioides, the Chinese money plant is also known as the Friendship or Pass-It-On plant as it multiplies profusely. This unusual succulent has dark waxy leaves, which resemble flying saucers. Pilea requires little maintenance; just periodically rotate its pot so all leaves receive light and grow evenly.

Tradescantia zebrina is an evergreen that will cascade down shelves. Cuttings can be snipped off when it has outgrown its space, and simply rooted in a glass of water. This pretty foliage plant also has tiny pink flowers that come and go. All-in-all an attractive, easy-to-grow houseplant.

Place your plants in a bright spot but away from radiators and draughts, even windows can be cold pockets. Reduce watering, under water rather than overwater, and stop feeding, it's not just hedgehogs that hibernate, plants need a period of dormancy over winter so give them a break.

Debi Holland

TRADESCANTIA ZEBRINA



SANSEVIERIA



CLEEVE VILLAGE HALL

Are you looking for a venue for a party, wedding, meeting, workshop or a space for a corporate event?

Cleeve village hall could be the venue for you.

Facilities include the main hall with a capacity for up to 120 people, as well as a separate side room & kitchen.

Competitive rates

For further details please contact Gill Roe

gillroe@btopenworld.com

01934 832917



SLEEPING WITH THE MOON

In 2021 storyteller Michael Loader slept out with the 12 full moons to inspire new encounters and writing. His monthly residency on Clevedon Pier continues on November 10th 7-9pm with a reading of his November story, the 'Darkest Moon' - accompanied by musician Martin Solomon who will then lead a participatory Music/chant workshop guided by his expertise in Indian music.

Bookings: Clevedon Pier at www.clevedonpier.co.uk or 01275 878846. Michael Loader at foolworks@yahoo.co.uk for all workshop content enquiries.

Drinks from the bar – Moon views from the telescope.

Michael Loader's Sleeping with the Moon podcast can be found on Spotify.

AAC Advertising Rates

One eighth page	£50 p.a.
One quarter page	£100 p.a.
Half page	£175 p.a.
Full page	£275 p.a.
Back page	£350 p.a.

Interested? Contact us for details
5,100 copies published annually
and read by many more

PILEA PEPEROMIODES



VILLAGE DIARY



of
Regular events in and around Cleeve

LOCAL MARKETS

Kingston Seymour
First Saturday of month
Kenn and Yatton
Second Saturday of month
Claverham
Third Saturday of month

Special Events This Month

Yatton Local History Society. November 1st. Yatton Methodist Church. 7:30pm

Christmas Extravaganza. November 1st - 14th. 3 Bishop's Mead. 11am - 6pm

Christmas Fair. November 12th/13th. St Bridget's Chelvey. 10:30am-4:30pm

Holy Trinity Christmas Fayre. November 19th. Village Hall

Yatton Music Society. November 26th. St Mary's Church Yatton. 7:30pm

Focos Christmas Party. December 3rd, Village Hall. 5:45pm

Christingle Service. December 4th. Holy Trinity Church. 4pm

Council Meetings. 2nd Tuesday each month. Cleeve Village Hall. 7:30pm



Brockley Stores

Fresh produce including seasonal and locally grown
 Good range of cheese and dairy
 In-house sliced ham, charcuterie, olives & anti-pasti
 Daily delivery of artisan breads
 Groceries, sweets and chocolates
 An extensive range of handmade food

Brockley Stores where food is.....

SOURCED WITH CARE
SOLD WITH INTEGRITY
SEVEN DAYS A WEEK
deliciously different

01275 462 753
 Brockley Stores
 Main Road (A370)
 Brockley, North Somerset
 Mon -Sat 8am - 6pm
 Sunday 9am - 5pm




The home of quality plants, expert advice & inspiration for your garden
 Located just 10 miles outside Bristol

- Quality Outdoor Plants
- Unusual Houseplants
- Peat-Free Compost
- Beautiful Gifts & Cards
- Seeds & Bulbs
- Wildlife Care
- Indoor & Outdoor Pots
- Café serving fresh food & drinks



Follow us on Facebook & Instagram for updates
www.cleevenursery.co.uk
 138 Main Road BS49 4PW
 01934 832134 / info@cleevenursery.co.uk

Should your group be listed here? Are your entries correct?

LOCAL DIRECTORY
ALL CODES 01934 UNLESS OTHERWISE STATED

Cancer Research (Yatton Gp.)	Pam Hale	833269
	Marion Clements	838562
Chemists	Backwell	(01275) 462386
	Yatton	832366
Clavertots	Michele Jenkinson	838671
Cleeve Guides	Helen Mortimer	(01454) 771957
Cleeve Scouts/Cubs	Steve Atroll	833912
Cleeve Toddlers	Rebecca York	0759 674905
Community Resilience Coordinators	Steve Molloy	834412 / 07988 656023
	Ross Floyd	(01275) 462211 / 07974 308398
Court de Wyck School Association	Sarah Palmer	(01275) 462068
Cricket Club	John Hance	832513
Cricket Youth Team	Carey Elswood (cleevecc.yahoo.com)	
Dentist	Cleeve	835753
Dog Training	Mrs Herman	834498
Dog Warden	bob.davis@n-somerset.gov.uk	(01275) 884113
FOCOS	George Waite	833268
Football Club	Mark Williams	07785 710315
Guide Dogs	Mrs Jane Newton	(01275) 873024
Holy Trinity (Churchwardens)	Nick Cush	832059
Holy Trinity (Team Minister)	c/o Team Office	832184
Ladies Group	Mrs Diana Cook	834621
Medical Centres	Backwell	(01275) 465100
	Yatton	839820
Mothers' Union	Andrea Stoddart	832458
Noise nuisance	Noise Control Officer	634847
North Somerset Council	(All Departments)	888888
Parochial Church Council	Dave Mortimer	838515
Parish Council	Andy Warren	07932 191964
Playing Field Trustees	Alice Jones	877208
POLICE	(NON-999 calls)	101
Post Offices	Backwell	(01275) 462721
	Yatton	832201
	Cleeve (Good News)	833295
	Claverham (Village Hall)	876581
Registrar of Births, Marriages, Deaths		427552
Sinclair Pavilion (Bookings)	Alice Jones	877208
	Colin Warren	07944 758510
Table Tennis Club	Mr Mike Withyman	833986
Tennis Club	cleevetennisclub@gmail.com	835150
Tennis Club Junior Coaching	John Tate (johnatatetennis@talk21.com)	(01275) 464373
Village Hall Bookings	Mrs Gill Roe	832917
Village Hall Secretary	Diana Cook	834621
YACWAG (Yatt & Cngsby Wildlife Action Gp.)	Mrs. Win Lowman	833596
Yatton History Society	Mrs Marianne Pitman	838801
Yatton Horticultural Society	Mrs Joan Pittock	832790
Yatton Music Society	David Ford	830255
Yatton Ramblers	Peter Marshall	833916

Clarkes Catering of Wrington
 Fresh homemade food delivered for
 business lunches, funerals, cream
 teas and cold buffets

Wrington 01934 862085
 email: vicky.clarke@talk21.com
 www.clarkesfood.com





www.paulinemadethis.co.uk
 01934 833648 ~ original and hand-made

J. A. Frost
B.A., B.Mus., Hon.TCM
 (formerly Senior Examiner in Music,
 Trinity College London)
*Consultant for all levels of music exami-
 nations, and tuition in music theory*
 27 Cleeve Drive, Cleeve, BS49 4NW
 Tel: 01934 832589

IONAIDA
 Interior Design, curtain, make-up, fitting
 and installation advice

- Curtain advice, make-up and fitting.
- A large range of fabric and wallpaper samples
- Blind ranges: Venetian, Vertical, Roller, Panels and Roman blinds.
- Poles and Tracks.
- Upholstery fabrics and re-upholstery.
- Paint colour and wallpaper advice.
- Accessory make-ups, cushions, bed-covers, duvets, window seat cushions...

A large selection of fabrics for all budgets
 Over 24 years experience ~ Company established in 2005
 Tel: 01275 464057 or 07854 525472
 www.ionaida.com

LAWN MOWERS
 Repairs / Servicing / Sharpening /
 New & Reconditioned Sales / Ride-on
 Tractor Mowers / Shear Sharpening
Tel: (01275) 464403
 King Garden Machinery
 Unit 5, Chelvey Waterworks
 Chelvey, Nr. Backwell

S.E. HARRIS
 TREE SERVICES LTD
01934 835652
07957 156358
 ALL TREE WORK UNDERTAKEN
 FREE QUOTATIONS
 NC Arb - NPTC Fully Insured
 e: sam@seharristreeservices.co.uk
 w: seharristreeservices.co.uk

Local Beer - Brewed on Iwood Lane
 Delivered to your door



Twisted Oak Brewery - Yeowood Farm
 Wrington BS40 5NU
 Tel.01934 310515
www.twistedoakbrewery.co.uk

Alternative Holistic Energy Practice
BodyTalk & Reiki - Sabrina Schmidt
NEW Side Business 20% discount on first session

- Promotes the body's natural self-healing abilities
- Individualised health care
- Non-invasive techniques
- De-stress, Reinstate emotional balance
- Prep for special occasions: exams, competitions, interviews etc.
- Safe, Simple, Effective

Zoom • Phone • In person
0744-8928954 • bodytalksabrina@gmail.com





YEARS

SERVING THE COMMUNITY

Robin King | Estate Agents

01934 876226 | post@robin-king.com